

The Next-Gen Fixed Broadband Service Endpoint Tester

NEXTLab netMeter



Service Providers are **Challenged to Reduce Endpoint Disruption**

Heavy Reliance on Field Engineer Capabilities

Consequently, the outcome can vary among different field engineers

Recurrence of Service Disruptions

As a result, repeated complaints & revisiting persist

Difficult to Pinpoint the Cause of Failure onsite

80% of Endpoint Disruption is caused by the last-mile cables



NEXTLab netMeter is to solve your Challenges

- ✓ The most cost-effective
- ✓ The Cloud-native gives you seamless integration & continuous updates



NEXTLab netMeter N1/N1+
Cloud-native Service QoE/QoS Validation

NEXTLab netMeter C1
Last-mile Cable Quality Validation

The **Cloud-native Platform** provides a lot of Possibilities

- (1) Immediate Test Data Collection
- (2) Rich Service Provider Integration
 - Not only test data transmit, but business logics can also be integrated
 - Open to adding the provider-specific functions



Integration using DB, API



NEXTLab netMeter Cloud Platform



Remote Control Available



OTA Update
- Continuous Updates of New Test Functions



NEXTLab netMeter N1/N1+

Test Functions	TCP Throughput Test (Internet Speed Test)	<ul style="list-style-type: none"> Up/Download Speed Ping/Loss Rate Use with nPerf's 3,000 servers globally - Dedicated servers are also available
	IPTV Streaming Test	<ul style="list-style-type: none"> RTP Error - Loss, Reorder, Duplicate ETSI TR 101 290 Delay, Jitter IGMP Join Delay Channel Bandwidth
	Other IP Tests	<ul style="list-style-type: none"> Ping, Traceroute TWAMP¹⁾ - Responder/Sender/Light Network Packet Capturing Network Emulation¹⁾ - Loss, Delay, Bandwidth
Device Specs.	N1 (1Gbps) <ul style="list-style-type: none"> 2 X 1Gbps RJ-45 1 X USB 2.0 1 X Infrared Transmitter Battery-powered CE, FCC, KC certified 	N1+ (10Gbps) <ul style="list-style-type: none"> 1 X 10Gbps RJ-45 & 1 X 1Gbps RJ-45 1 X USB 3.0 1 X Infrared Transmitter Battery-powered KC certified

The screenshot displays the NEXTLab CBT application interface. The main menu includes options for Board, Manual, and History. The central area features several measurement tools: Internet speed measurement, IPTV service quality measurement, Ping Test, Trace Test, Packet Capture, and Connection Info. A detailed test results screen is visible on the right, showing a download speed of 771.08 Mbps and a ping test result of 2.9ms. The interface also includes a 'real-time channel measurement' section with data for KBS1(9), SBS(5), and OCN Movies(45), and a 'CRC error' section showing 0 items.

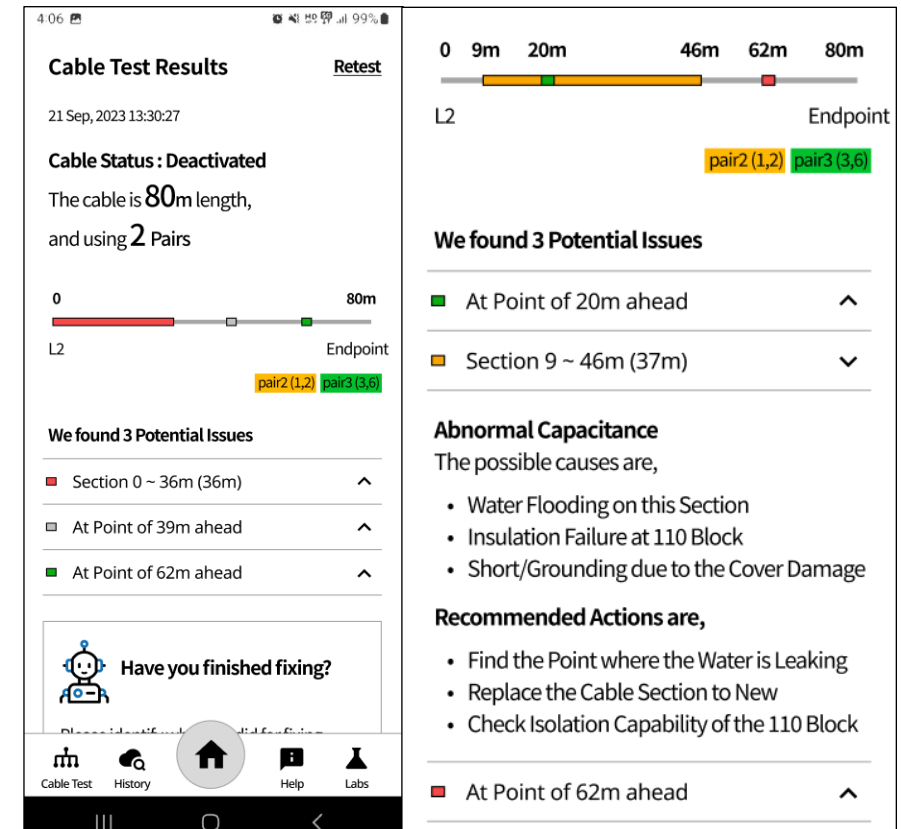
1) Under Development : Open in December 2023

NEXTLab netMeter C1

(Beta Version – Launch & First Delivery in December 2023)

- ✓ The most cost-effective Cable Quality Validation
- ✓ Zero Training : AI-based Analysis lets the beginner engineers to fix the problem

Analysis Criteria	<p>1) Guidance-based Cable Quality Test</p> <ul style="list-style-type: none"> • TDR-based Physical Measurement • AI-based Analysis & Fixing Guidance <p>2) Cable Length Measurement</p> <ul style="list-style-type: none"> • TDR-based Physical Measurement • Up to 150meters & Accuracy $\pm 4\%$
Other Facts	<p>1) Supporting Cable Types</p> <ul style="list-style-type: none"> • 4Pair Ethernet Cable • Telephony Cable • Coaxial Cable <p>2) TDR Resolutions</p> <ul style="list-style-type: none"> • 3cm



AI-based Analysis & Fixing Guidance

With **NEXTLab netMeter**, you can

Reduce Revisiting Cost

By offering standardized & portable service quality test & evaluation tools for field engineers.
LGU+, an operator with 5M broadband subscribers, reduced 1M USD/year with NEXTLab netMeter.

Enhance Field Engineer Capabilities

NEXTLab netMeter provides not only various measurement indicators, but also provides how-to-fix guides.

Improve Subscriber's Quality of Experience

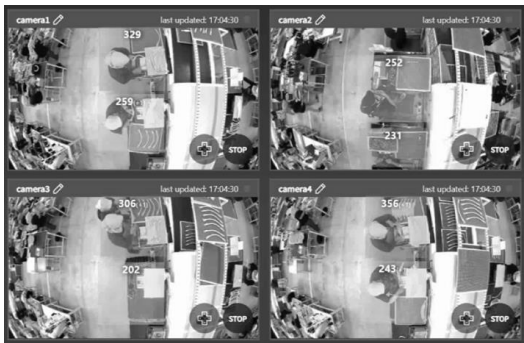
By providing always SLA satisfied service to subscribers





Website	https://www.nextlab.ai/en/
LinkedIn	https://www.linkedin.com/company/nextlab-ai/
Youtube	https://www.youtube.com/@nextlab1359
Email	sales@nextlab.co.kr
Company Introduction	https://qrco.de/beM3n9

We support **Industries' Digital Transformation** by Providing **AI Vision-powered Test & Measurement Solutions**



Smart Factory

PUNGKOOK CORPORATION
SINCE 1966 - LUGGAGE , PACKS AND LEATHER GOODS



Telecommunication



Mobility

